

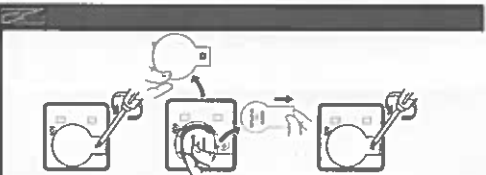
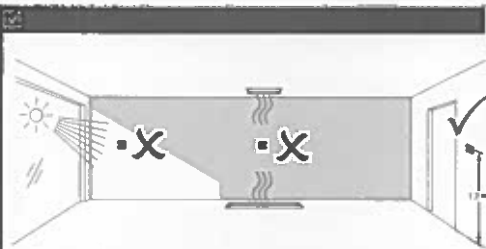
Item Nr.:
S903TH-ZG

Item Description:
Zigbee Temperature and Humidity Sensor

NOTICE

RISK OF DAMAGE TO DEVICE

Always operate the product in compliance with the specified technical data.
Failure to follow these instructions will result in equipment damage



This sensor combine two sensors in one unit. The sensor measures temperature and humidity in the environment where the sensor is installed.

DATASHEET

Description	Humidity & Temperature Sensor
Protocol	Zigbee 3.0
Wireless Range	100m Outdoor, 30m Indoor
Power Source	CR2450
Max. Working Current	10.8mA
Standby Current	< 1uA
Temp. Accuracy	± 1.5°C
Humidity Accuracy	± 5%
Operating Temp.	-10°C - 40°C
Operating Humidity	Up to 85% non-condensing
Dimension	45*45*17.1mm

SETTING



1. FACTORY RESET

Long press Button B for 10s, A will blink quickly in red, then release B and A will stay solid for 3s and reset.

2. ADD TO THE ZIGBEE NETWORK

Push B for 3 times,

- if the device is not in the network, A will blink slowly in orange, then it will start searching network and adding.

- if the device is in the network, A will blink slowly in green for 5s. Then please do factory reset and pair.

3. INDICATOR MEANING

A. Power on: A blink in green slowly for 7 times.

B Add to the network

a. Searching the network: A blink slowly in orange, timeout 2mins.

b. Add to the network: A stay in solid green

c. Added successful: A turns off.

d. Add network failed: A stay solid orange for 3s then off.

C. When the battery power is empty soon, A will blink orange once per minute.

D. When the device is lost connection with the hub, A will blink quickly in orange for 3s.